

June 2011

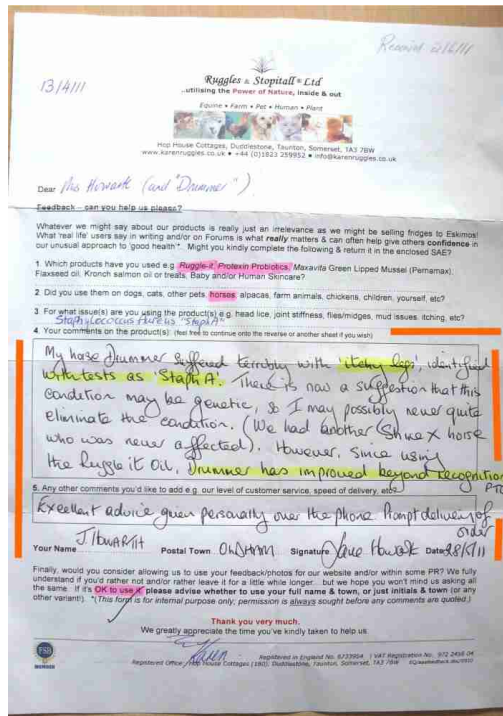
Ruggle-it & Probiotics Testimonial

for

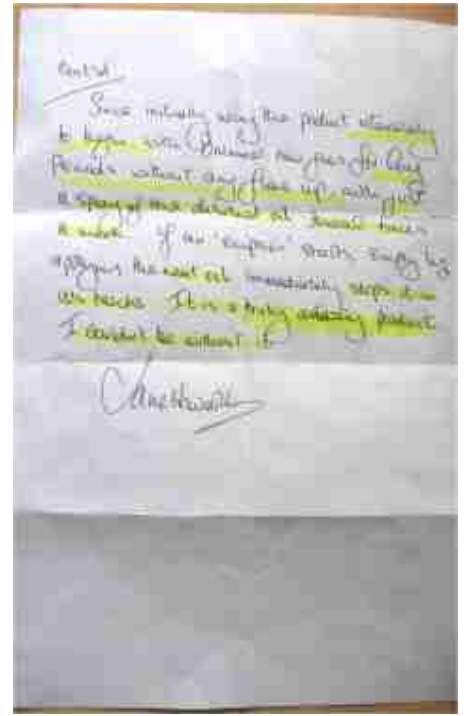
Equine Mites, Stamping, confirmed Staphylococcus Aureus (Staph A) skin invasion, dust issues, immune system sensitivities

All [redacted] areas are text/names/descriptions that may contravene Veterinary Medicines Directorate regulation; text within [] has been inserted by this office.

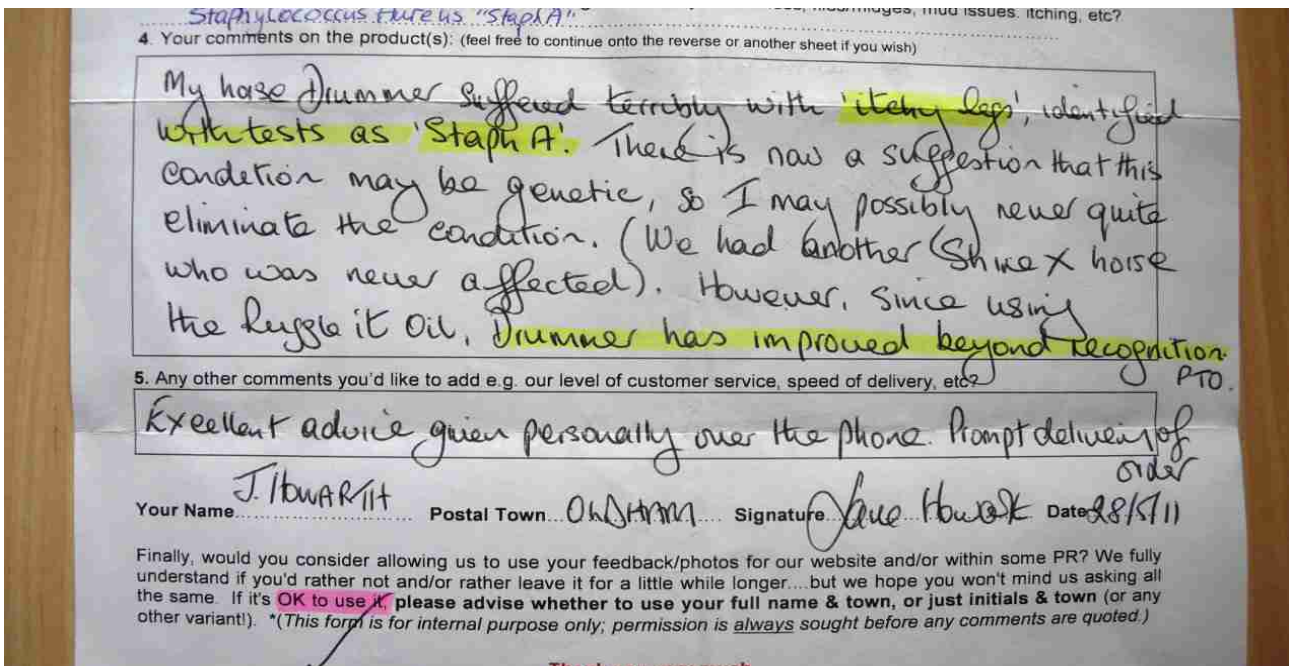
[ZOOM NOTE: To clearly see this text, please use the '+' keys on the top of this screen to enlarge it to 100% or greater]



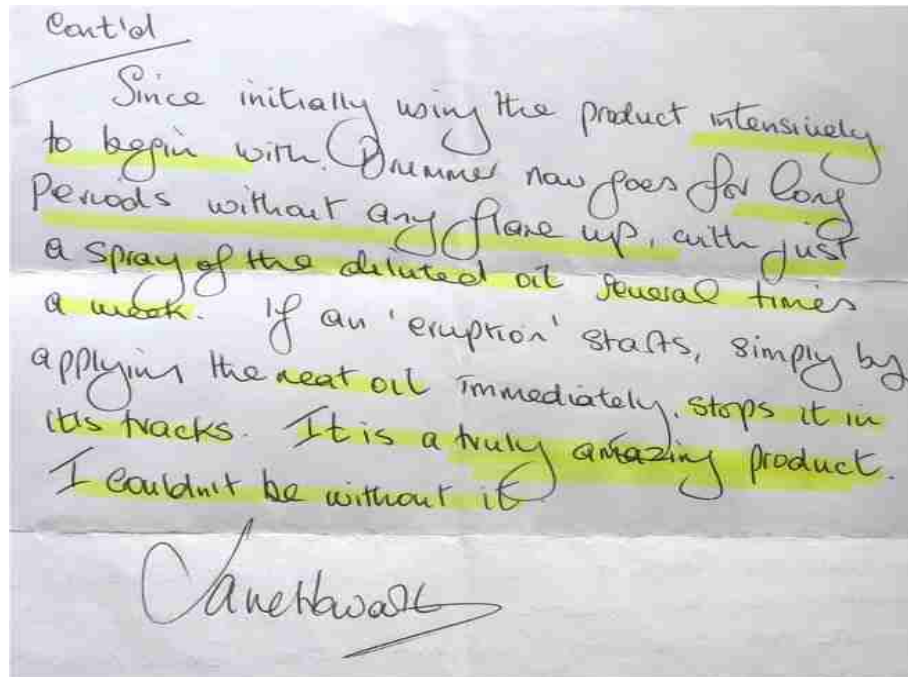
Page 1 of 2 (see below)



Page 2 of 2 (see next page)



Page 1 Snapshot (from inside the orange lines)



Page 2 Snapshot

[Office Comment: Due to the severity of Drummer's issues & the time he'd struggled with it, his new sensitivity to 'dust' clearly demonstrated to us that his **immune system response** was 'confused' – we see many cases where knock-on issues start to appear...seemingly unconnected but in our opinion & experience, they are **totally connected** to struggling immune systems.

Therefore, we advised Mrs Howarth to use **Starter Pack 2-H** – which is **Ruggle-it** for the outsides & with **Protexin probiotics** for his insides, to help his body 're-boot' itself by helping his body generate more 'friendly bacteria'.

Staph A is a vicious issue that behaves like a **"knife-wielding thug, trying to intimidate all treatments that are trying to chase it"**. As it's a cousin of MRSA, in our experience there is no easy way to deal with it (chemical or natural) & no one product that will help a body 'heal itself'.

In many cases the "thug" makes the issue **worse** once application starts in its attempt to get us off its back.

In our experience & by using the **Ruggle-it plus Protexin**, we find that most bodies CAN chase the "thug" out of their systems by very slowly forcing it to the edge of its cliffwhere once the "thug" has jumped off that cliff, the body can then move forwards as the body/immune system is able to 'manage' the issue itself.

Again and in our experience, what one sees on the surface is a fraction of where the "thug" is actually resident under the skin.....

Staph A is a very serious issue; we are very happy to work alongside any Vets as this 'infection' is sadly becoming increasingly common.

Always consult your Vet.

Many thanks to **Mrs Howarth (and Drummer)** for taking the time to write this feedback.

Note: Whilst we are hugely grateful for all the telephone feedbacks we receive on our products, only ones received in writing will be considered for inclusion on this web or as part of any PR...so that readers have peace of mind that we're not making this up! All quoted testimonials can be viewed at our offices.