

Update 21.06.15 ***WARNING - Red/Orange 'Dots', Harvest Mites return***

3 July 2012 at 08:39

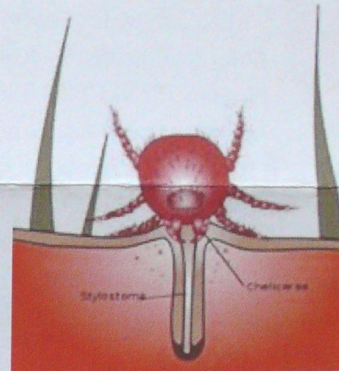


June 2015 - *Ruggles & Stopital Ltd* are hearing these 'red or orange devils' are back attacking pretty much **any animal or human**.

The following is relevant, **whatever** the year. From approx **June to October/November** each year, if **itching increases** a lot, and/or you see **orange or red dots** on the skin, then this is **99%** likely to be relevant. However, thus far in 2015, they do not seem as bad as 2014...perhaps we've spoken too soon!

[**Update 07.08.14** - thus far 2014 HM season, their attacks seem extensive, especially for cats, small animals & large animals that lie down]

- i) We're re-posting today (**18/7/14**) **as in the last 10 days**, there has been an increase in determined lower leg, muzzle & body itching (& especially paw chewing in pets).
- ii) The original of this note was posted July 2012 - but it's still relevant each year although we've updated it since.
- iii) Do **share if helpful to others** - thanks



We are fast approaching the **dreaded Harvest Mite season**... So don't let them get you or your animals!

Prevention is cheaper & much simpler than cure :))

>>> A. Small Animals.

1. If you're not needing to bath much at the moment, then regularly spray-bath with your **Ruggle-it** shampoo mix (we're spray-bathing about twice a week & of course it only takes about 10-20 seconds to do - perhaps 60 seconds for big dogs!),
[Can't bath? Just sponge it in instead with no rinse - ideal for nervous animals/cats],
and
2. apply your dabs of semi-solid salve (or neat oil) in all the **"Must Do Zones"** (and don't forget the **ears** too) - we're currently doing this about once every 10 days (we also don't want ticks, hence we're a bit proactive with it all!). After all, the amounts used are tiny so it's costing pennies & of course we're staying away from chemical alternatives.
3. (*Refer to your Orange Application Booklet (OANB) if you're unsure where to get Ruggle-it*).
4. **Not helping enough?**

- >>> i). Then have you seen our "**Extra Strength**" **FB note**? R&SL have certainly used it recently although whatever was causing the manic "*I've been pinched violently*" itching seems to have abated thankfully! **Click THIS** <https://www.facebook.com/notes/ruggles-stopitall-naturally/update-0514-severe-pet-itching-ruggle-it-tip-whens-a-bath-not-a-bath/624244497668029>.
- >>> ii). Or see **P13** of your **OANB**, **Shampoo** item, section "*Timid or Bath-Phobic animal?*" regarding adding **Ruggle-it** salve or oil to your shampoo mix.

>>> **B. Large Animals & Kennelled/Working dogs (outdoor-living).**

1. Sponge or spray on lots of your **Ruggle it** DIL (diluted oil)
2. especially in your "Must Do Zones", **but**
3. also the lower limbs, sides of belly (if they lie down) & muzzle...
4. (refer to your *Orange Application Booklet (OANB)* if you're unsure).

OR: See **this** for i) what are they, ii) what to look for, iii) why it causes one of the **world's most intense itchiness** etc. **CLICK HERE**



******QUESTION****** **Itching **BEFORE** July?** Then the following may be helpful:

1.

Horses & Donkeys

- <https://www.facebook.com/notes/ruggles-stopitall-naturally/the-secret-to-tailbum-itching-manes-4-stripe/657731114319367>

2.

Alpacas, Llamas, Goats, Farm Animals ++

- <http://www.facebook.com/notes/ruggles-stopitall-naturally/itchy-tails-the-answer/458606427565171>

3. **Pets and/or Large Animals** - mystery itching, Millennium Mites + (06.14 mites spike)
- http://www.karenruggles.co.uk/ruggleit_pages/ruggleit_newsnippets/fb_mites1pgall.pdf
4. **R&SL News & Snippets** page - it may be easier/quicker to locate what you're after by scrolling down the following page -
http://www.karenruggles.co.uk/ruggleit_pages/ruggleit_newsnippets.htm
5. **R&SL "FB Notes"** - see lots from over the years, many still relevant each year
- <https://www.facebook.com/rugglesstop/notes>

Need to order more Ruggle-it? **Click HERE** for the online shop.